

美星天文台 101cm 望遠鏡 分光器
鉄・ネオン 波長チャート

第 1.0 版

川端哲也 (美星天文台)

2005 年 4 月

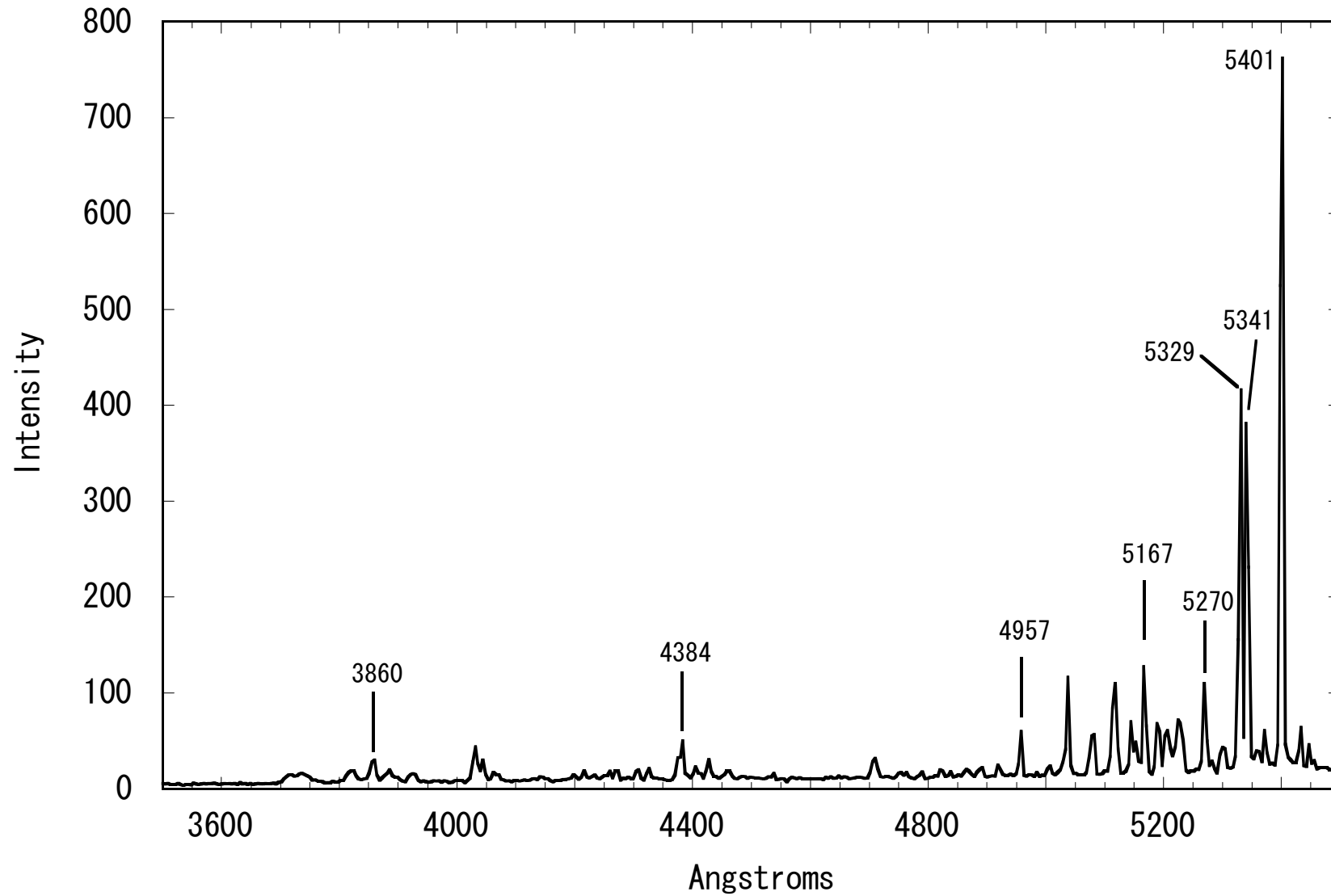
もくじ

低分散スペクトル（広領域チャート）	3
3500Å~5500Å	4
5500Å~8000Å	5
7300Å~10000Å	6
低分散スペクトル（狭領域チャート）	7
3500Å~4600Å	8
4500Å~5600Å	9
5100Å~5900Å	10
5700Å~6800Å	11
6800Å~7800Å	12
7800Å~9000Å	13
9000Å~10000Å	14
IRAF identifyコマンド用 低分散データ	15

低分散スペクトル（広領域チャート）

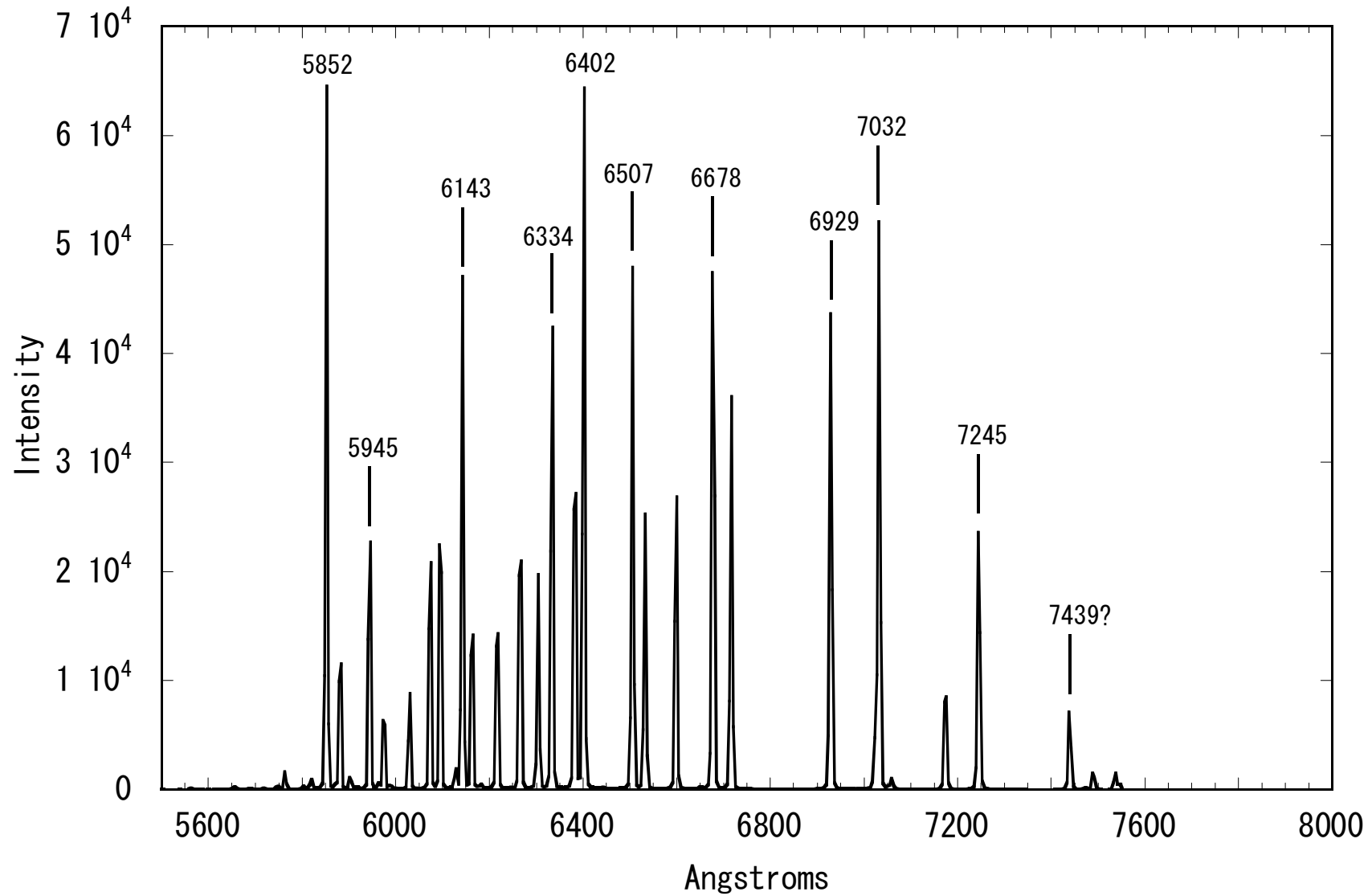
3500 Å ~ 5500 Å

FeNe Chart 3500A - 5500A



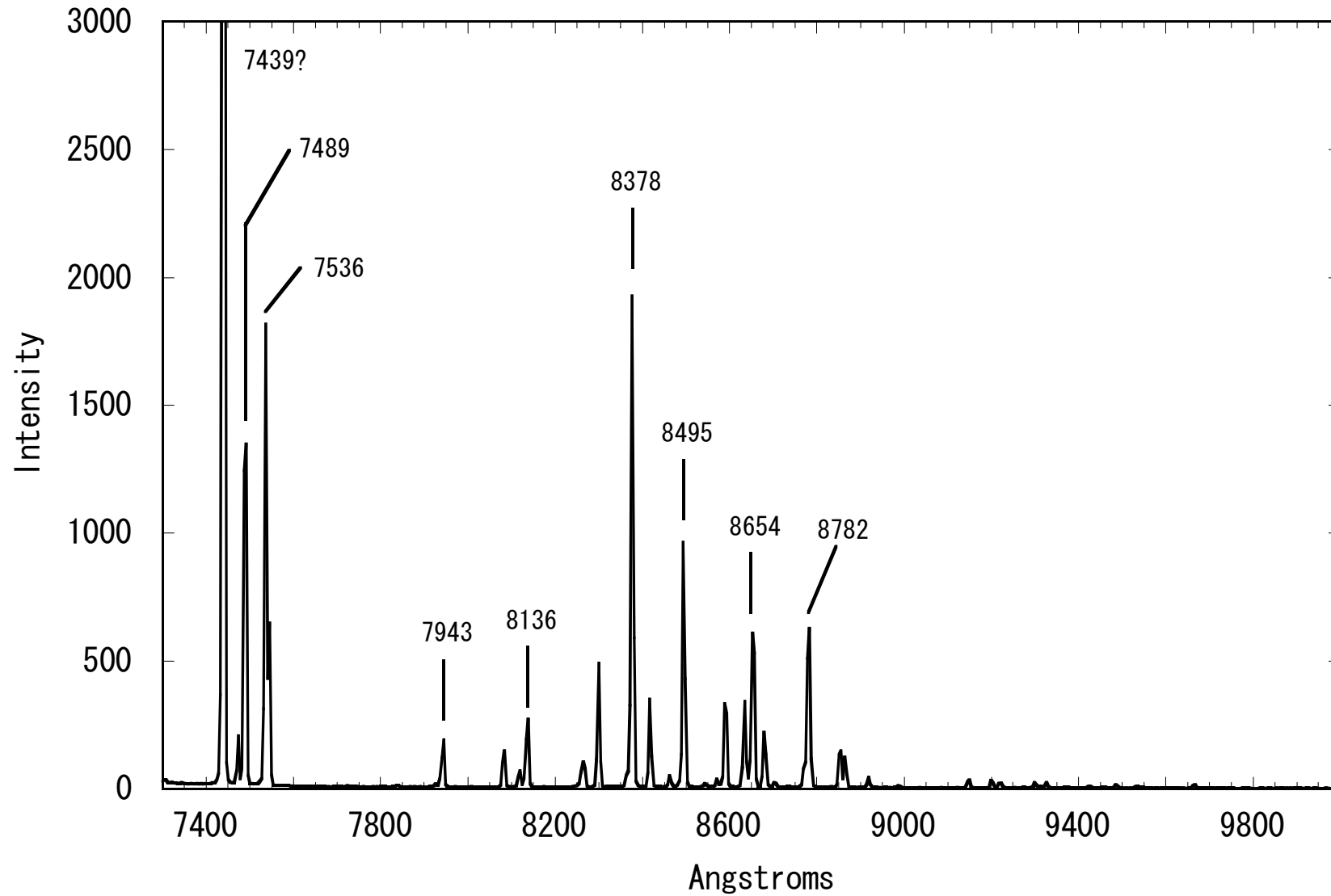
5500 Å ~ 8000 Å

FeNe Chart 5500A - 8000A



7300 Å ~ 10000 Å

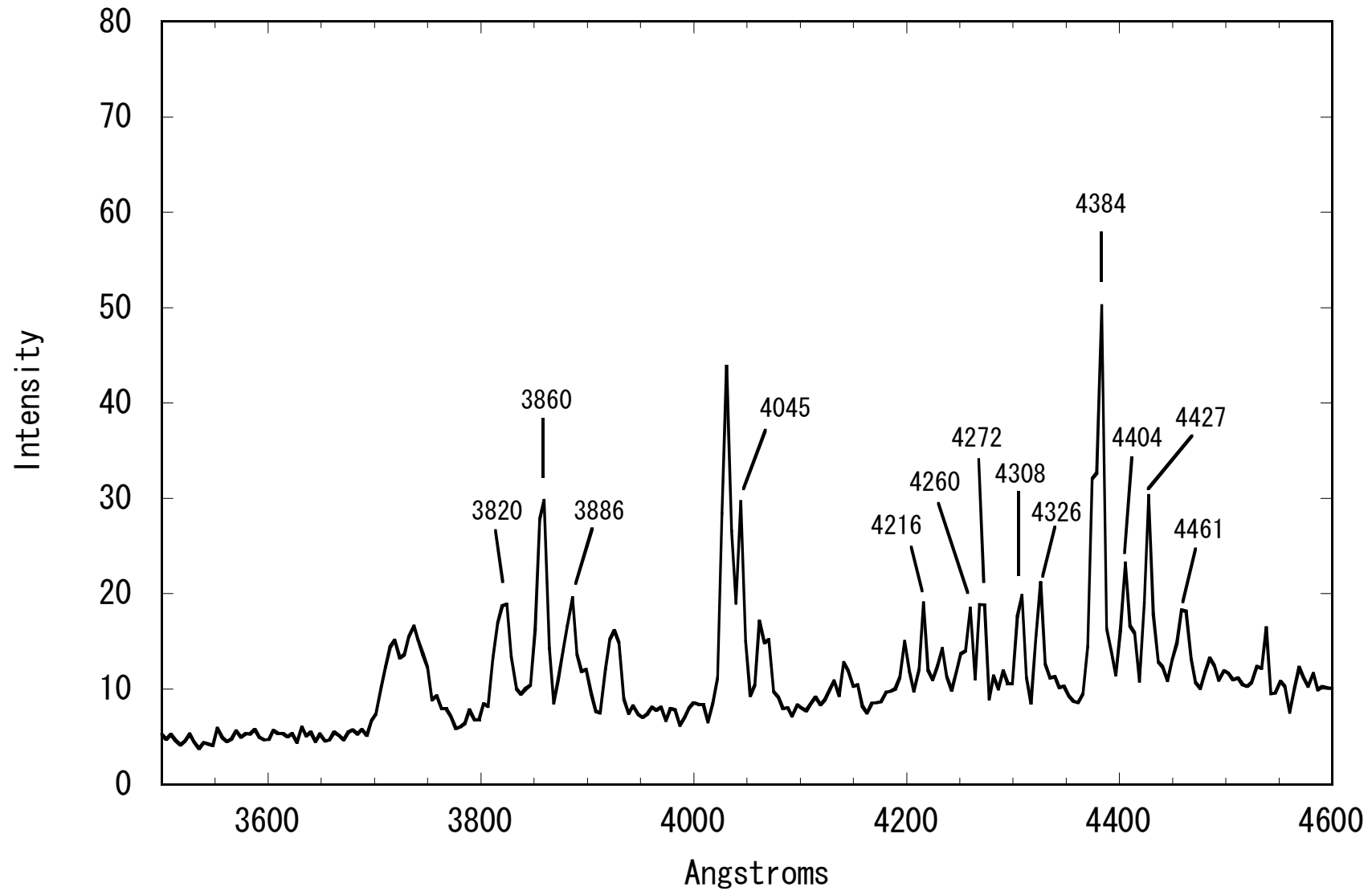
FeNe Chart 7300A - 10000A



低分散スペクトル（狭領域チャート）

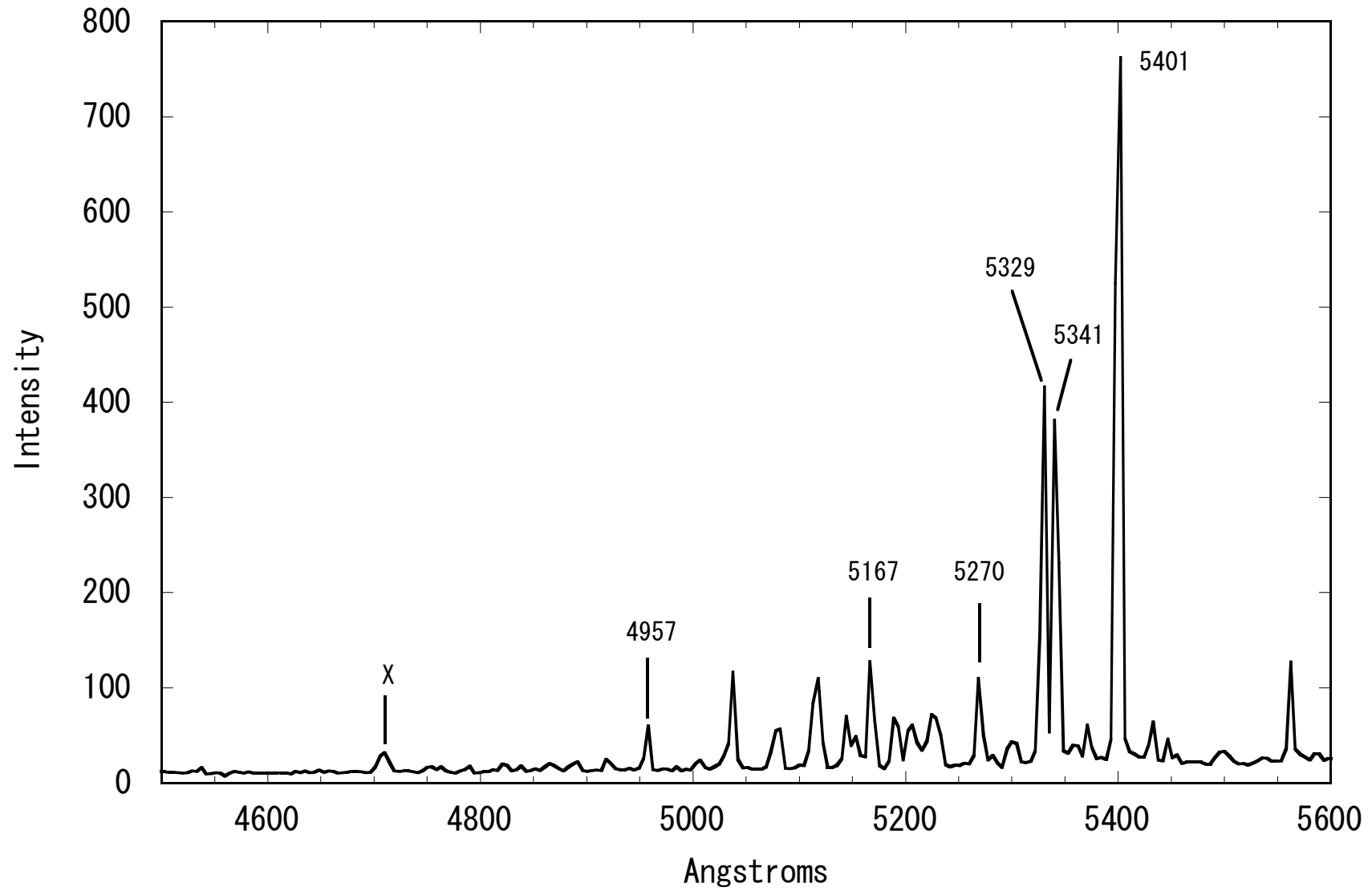
3500 Å ~ 4600 Å

FeNe Chart 3500A - 4600A



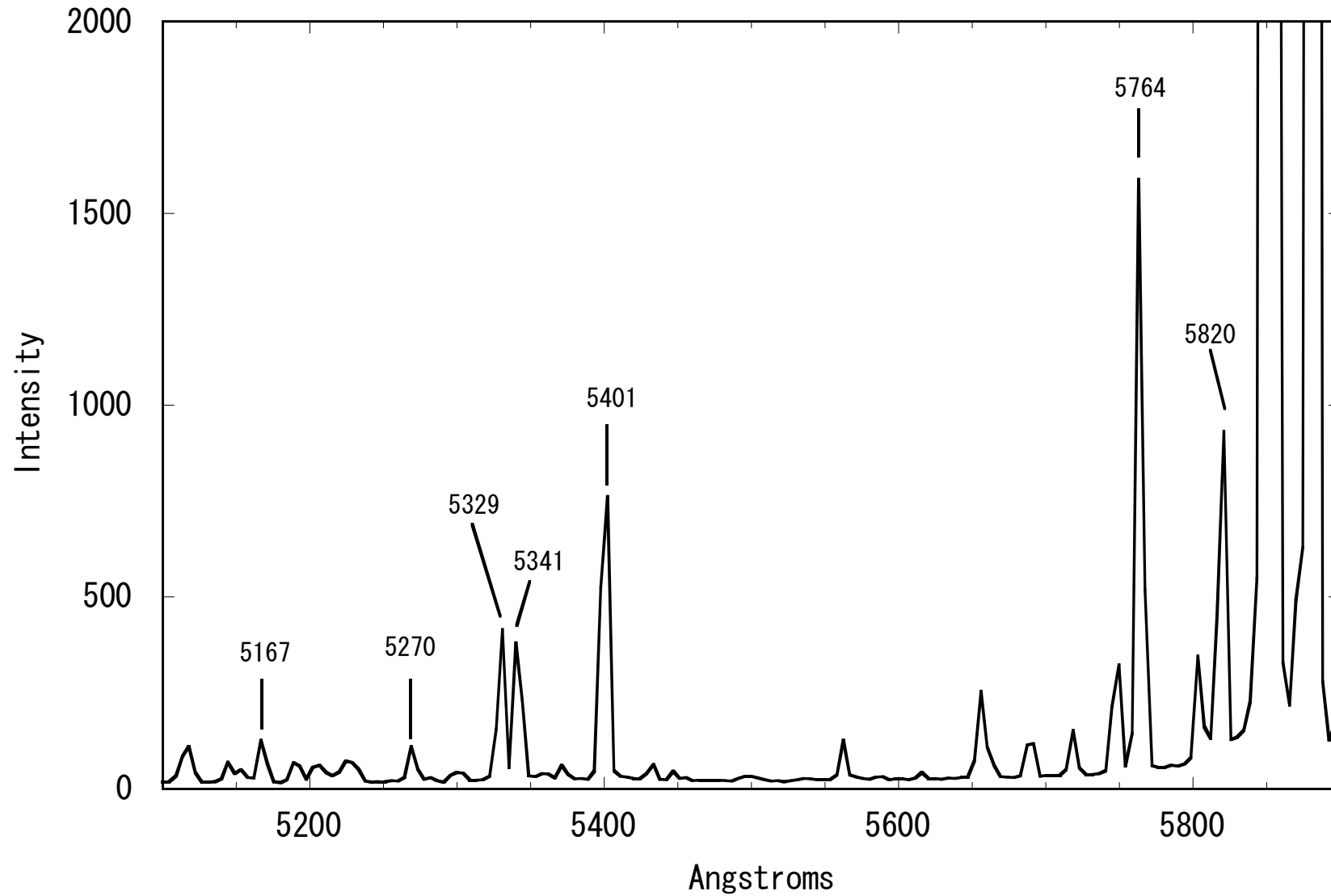
4500 Å ~ 5600 Å

FeNe Chart 4500A - 5600A



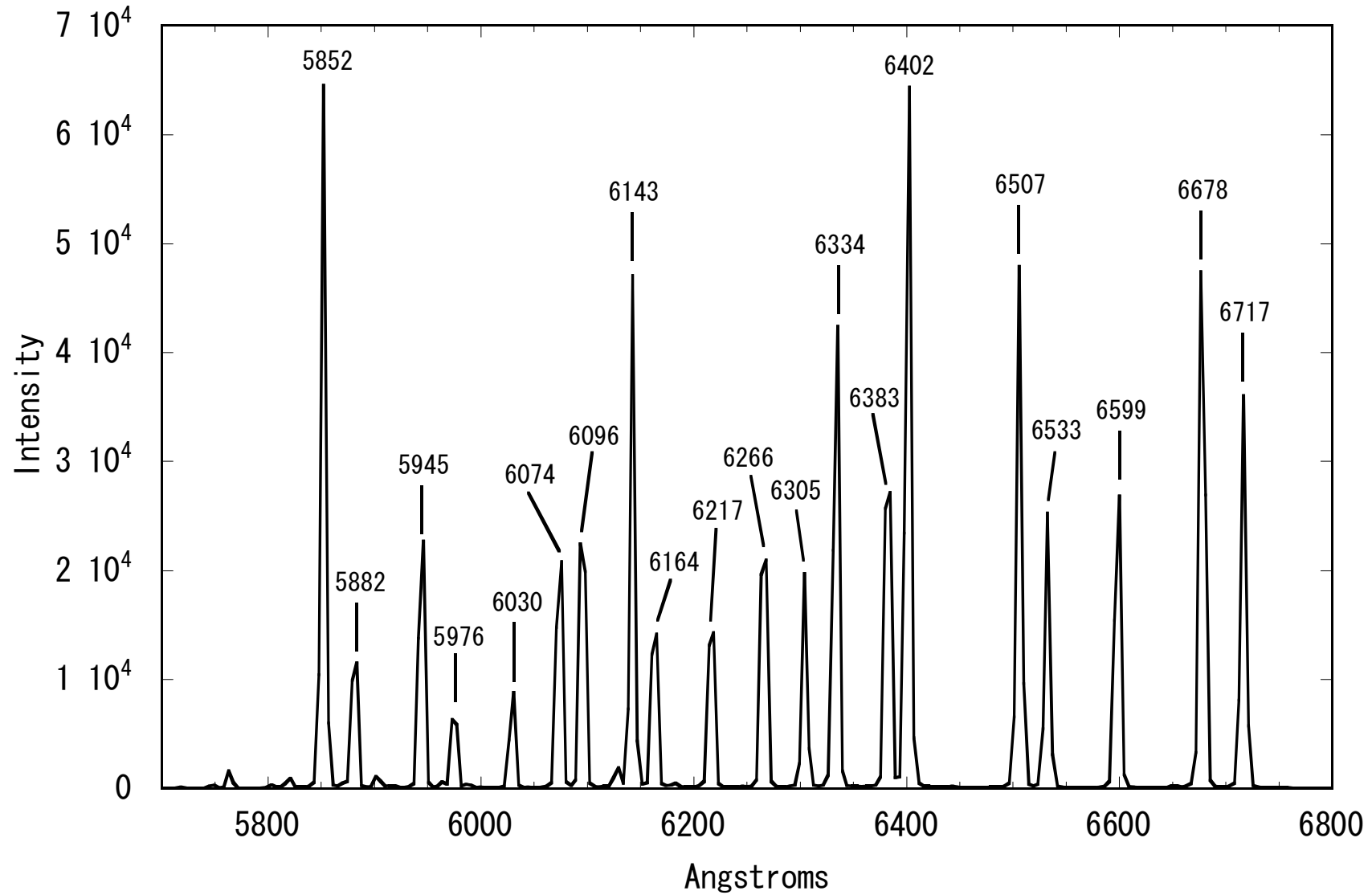
5100 Å ~ 5900 Å

FeNe Chart 5100A - 5900A



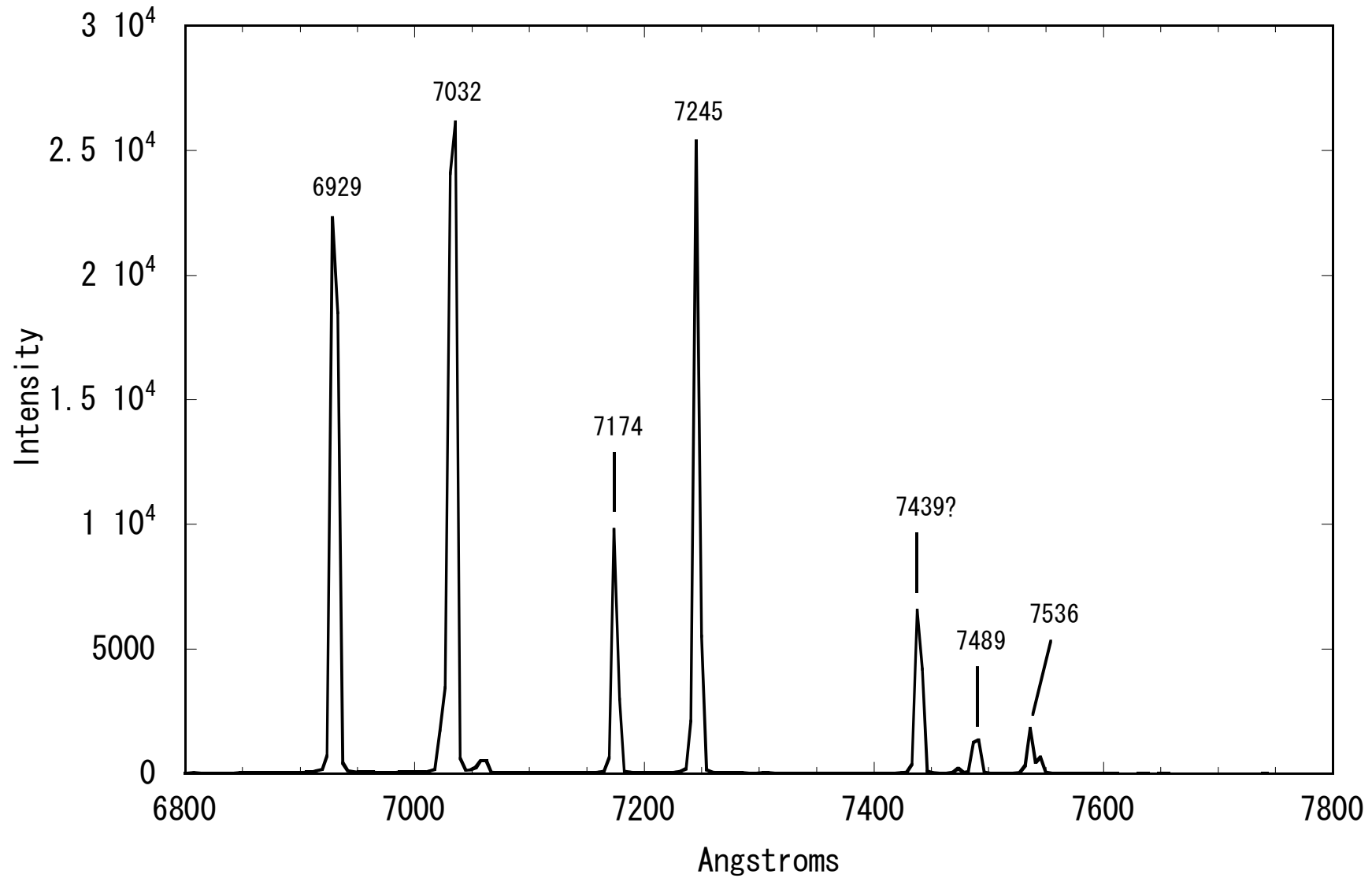
5700 Å ~ 6800 Å

FeNe Chart 5700A - 6800A



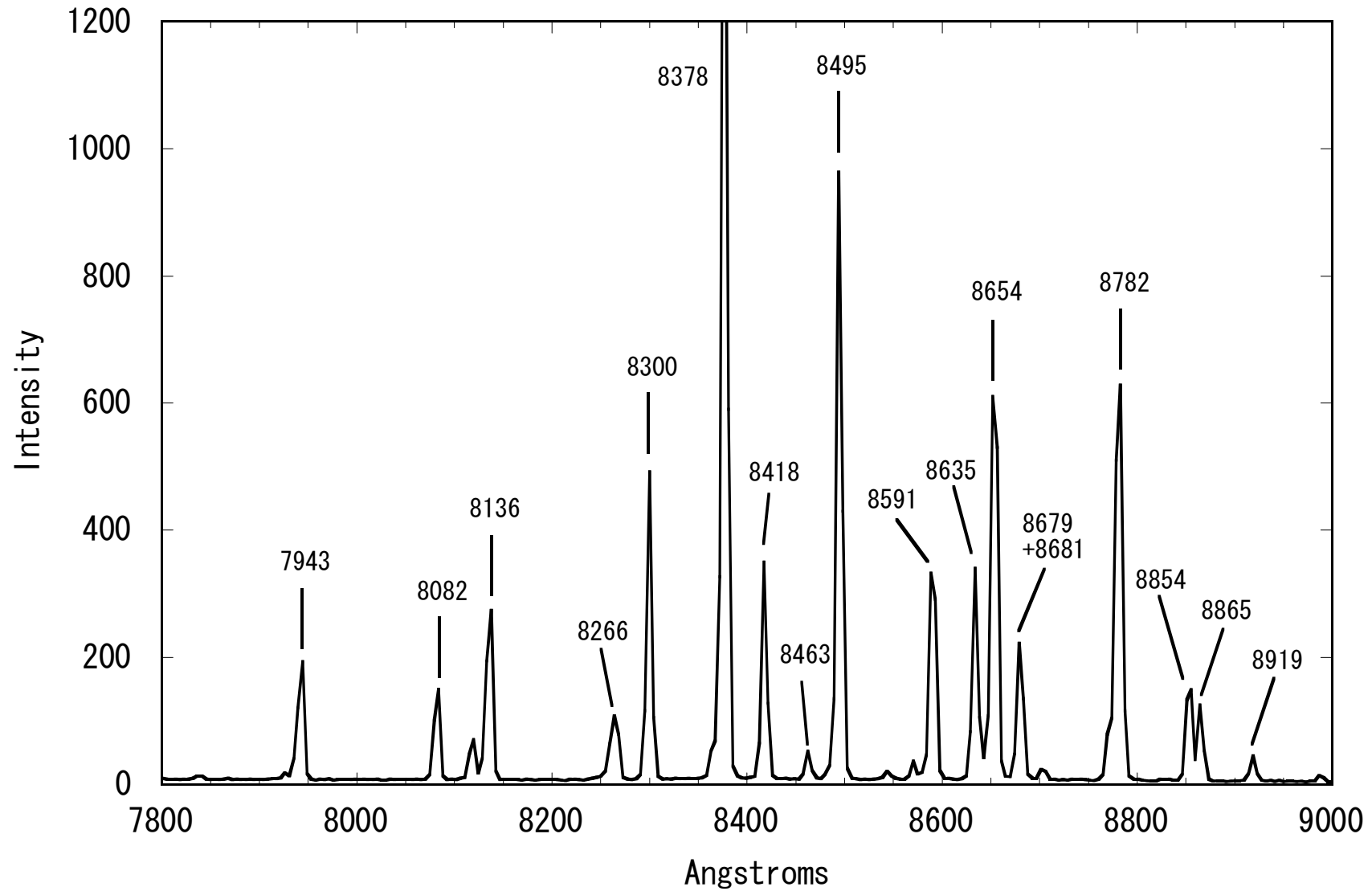
6800 Å ~ 7800 Å

FeNe Chart 6800A - 7800A



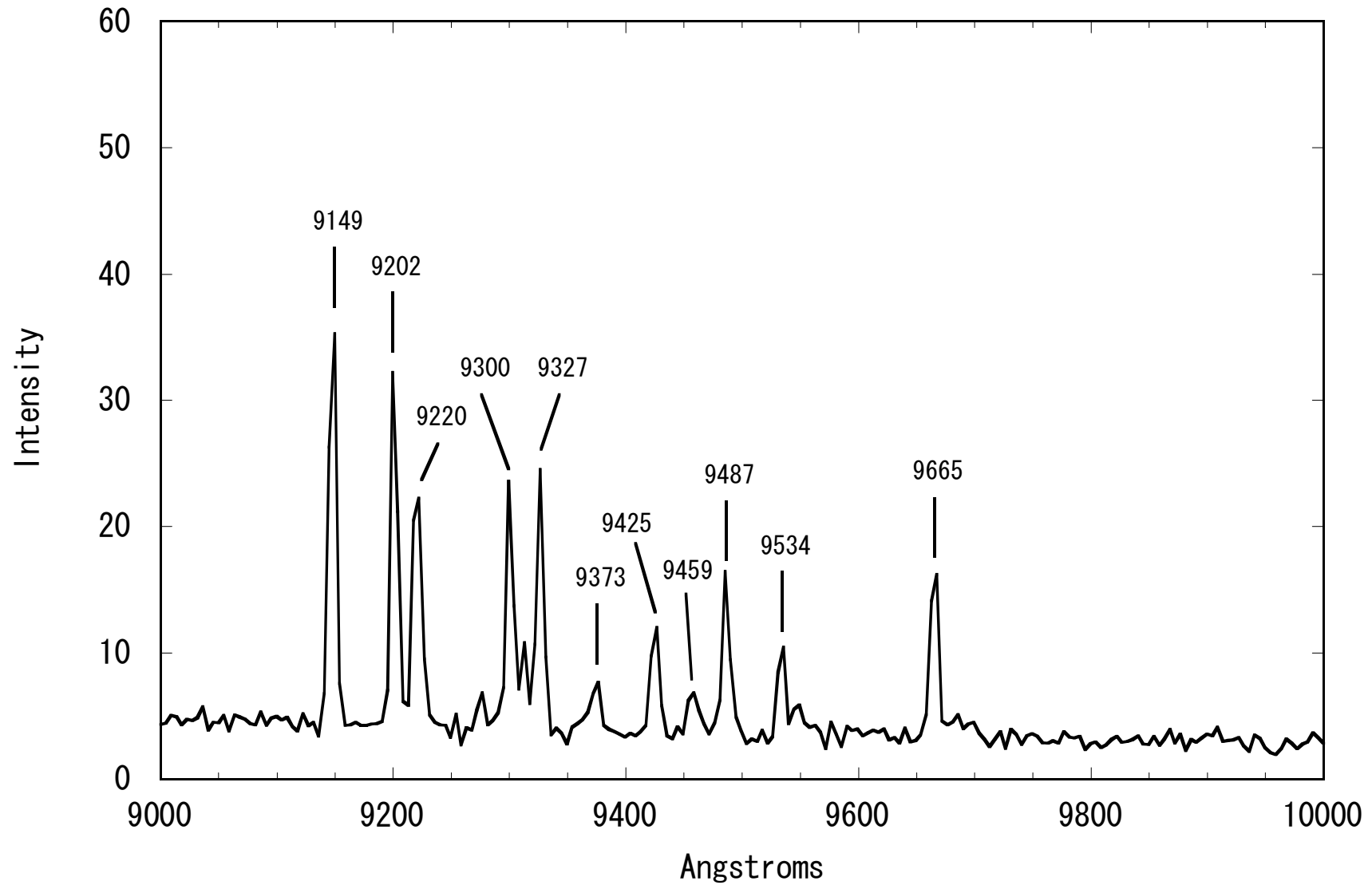
7800 Å ~ 9000 Å

FeNe Chart 7800A - 9000A



9000 Å ~ 10000 Å

FeNe Chart 9000A - 10000A



IRAF identify コマンド用 低分散データ

baofenelow2.dat

3820.4250	2500	5975.5337	3000	7535.7749	2500
3859.9114	10000	6029.9966	5000	7943.1812	500
3886.2822	4000	6074.3364	12000	8082.4580	400
4216.1836	400	6096.1626	15000	8136.4058	1000
4260.4741	800	6143.0620	15000	8300.3252	2000
4271.7603	1200	6163.5938	10000	8377.6074	10000
4307.9023	1200	6217.2808	10000	8418.4277	1500
4325.7617	1500	6266.4941	15000	8495.3604	6000
4383.5449	3000	6304.7886	10000	8591.2598	3000
4404.7505	1200	6334.4258	20000	8634.6484	2500
4427.35	600+600	6382.9888	15000	8654.3838	5000
4461.6528	400	6402.2461	25000	8782.1872	NeIb
4957.5967	1500	6506.5278	20000	8853.866	NeI
5167.4883	2500	6532.8818	12000	9148.6738	11000
5269.9	1200+800	6598.9526	15000	9201.7598	12000
5328.5	800+300	6678.2764	25000	9326.5088	10000
5341.0239	500	6717.0425	20000	9425.38	NeI
5400.5615	600	6929.4673	25000	9486.6846	11000
5764.4209	800	7032.4116	25000	9534.167	NeI
5820.1572	400	7173.9385	10000	9665.4216	24000
5852.4873	25000	7245.1665	20000		
5881.8945	10000	7438.899	NeI		
5944.8340	12000	7488.8721	2500		